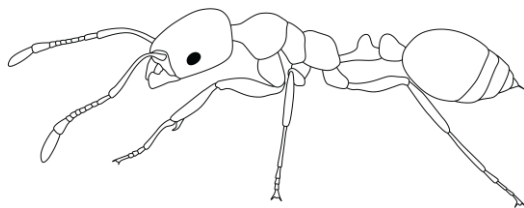


PIPE CLEANER ANT ACTIVITY

ABOUT THIS ACTIVITY

Ants have very distinct parts that can be helpful when trying to identify a certain species. While all insects consist of three body parts (head, thorax, abdomen) and have six legs, ants can be distinguished from all other insects by the presence of an extra structure between thorax and abdomen and by the shape of their antennae. These and other structures vary among ant species and help identify taxonomic groups like subfamilies, families, genera and species (also see “Tree of Life”, “Spirit Ant”, and “Ant ID” activities)

In this activity, students learn the names and locations of all body parts of an ant by creating a model out of pipe cleaners (or chenille sticks). They first construct each body part following an instructional video and then they use an ant diagram to assemble each part by themselves.



HERE'S WHAT YOU'LL NEED

- Instructional video (available [here](#))
- Student worksheet “Antsy Anatomy”
- Picture of ant anatomy (available [here](#))
- Pipe cleaners (or chenille sticks) – about 25 per ant model
- Scissors
- Paper (one sheet per ant model)
- Painter’s Tape

DIRECTIONS

1. Pass out student worksheets
2. Project ant anatomy and let students fill out work sheet
3. Project video or let students view video on their own device, if available
Instructional video covers construction of:
 - Head – 1 pipe cleaner for frame, several to wrap it for shape
 - Eyes – 1 pipe cleaner (1/2 pipe cleaner per eye)
 - Two antennae – 1 pipe cleaner (1/2 pipe cleaner per antenna)
 - Thorax/Mesosoma – 1 pipe cleaner for frame, several to wrap it for shape
 - Six legs – 6 pipe cleaners (one for each leg)
 - Abdomen/Gaster – 1 pipe cleaner for frame, several to wrap it for shape
4. Instruct students to assemble body parts using their labeled worksheet



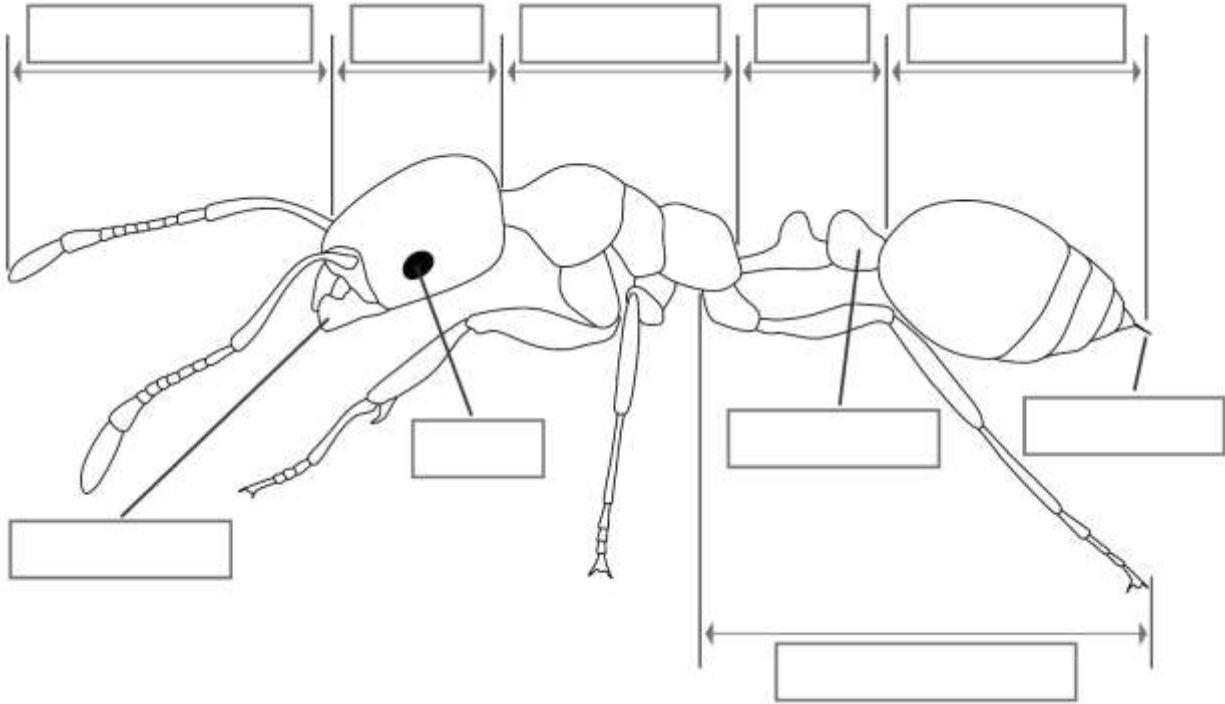
HELPFUL HINTS

- Depending on the size of the model ant, the number of pipe cleaners/chenille sticks needed may vary.
- Student worksheet “Antsy Anatomy” is available in 2 sizes: half-sheet or whole sheet (landscape)
- You can project or print the ant anatomy picture, it is available in color [here](#) or in b/w [here](#).
- If you are interested in making a model of a certain species, look at the dichotomous key (available [here](#)), [YourSpiritAnt.com](#) or [AntWeb.org](#) for an even greater selection. You can adjust color, size, number of petiole nodes, and overall shape of your model ant to fit your selected species.

Name: _____

Antsy Anatomy

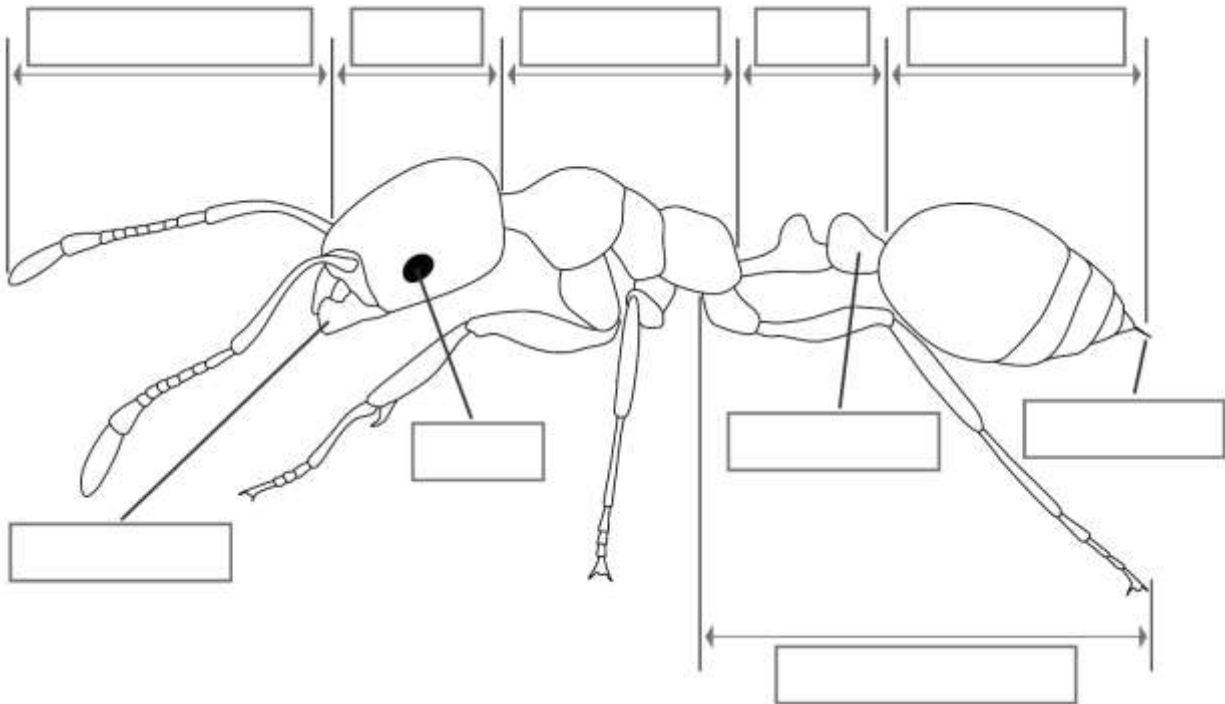
Label the ant parts in the image below!



Name: _____

Antsy Anatomy

Label the ant parts in the image below!



Name: _____

Antsy Anatomy

Label the ant parts in the image below!

